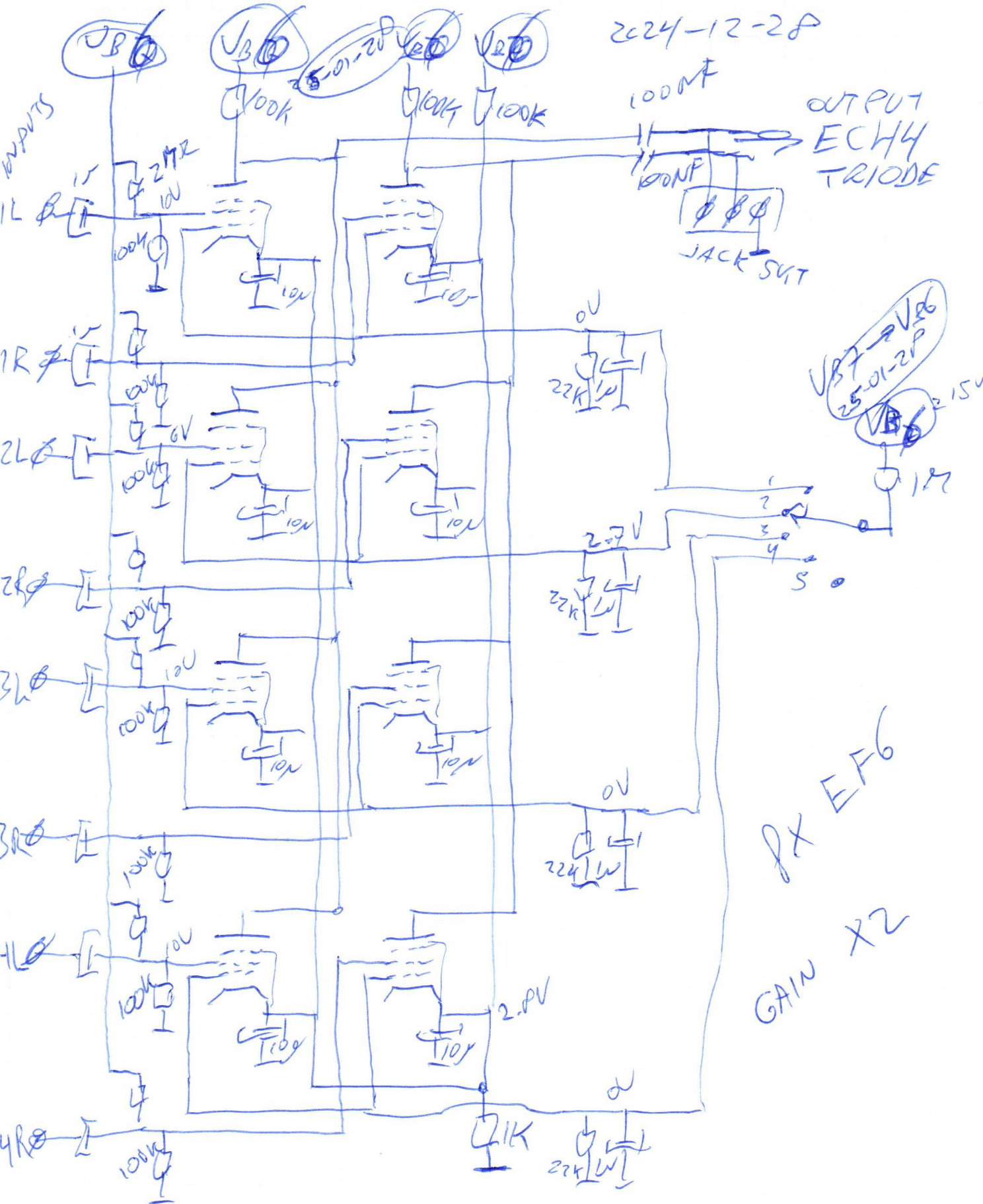


2024-12-28



OUTPUT
6X4
TRIODE

JACK SWT

V_{B7} → V_{B6}
2.5-0.1-2P
V_{B6} → 2.5V

6X EF6
GAIN X2

INPUTS

1L

2R

3L

3R

4L

4R

4R

4R

V_{B7}

V_{B7}

V_{B7}

V_{B7}

2.2k

2.2k

2.2k

2.2k

2.2k

2.5V

2.5V

2.5V

2.5V

100μF

100μF

100μF

100μF

100μF

100μF

100μF

100μF

100μF

100μF

2MΩ

100k

100k

100k

100k

100k

100k

100k

10μF

10μF

10μF

10μF

10μF

10μF

10μF

10μF

10μF

1 2 3 4 5

1.5V

2.5V

2.5V

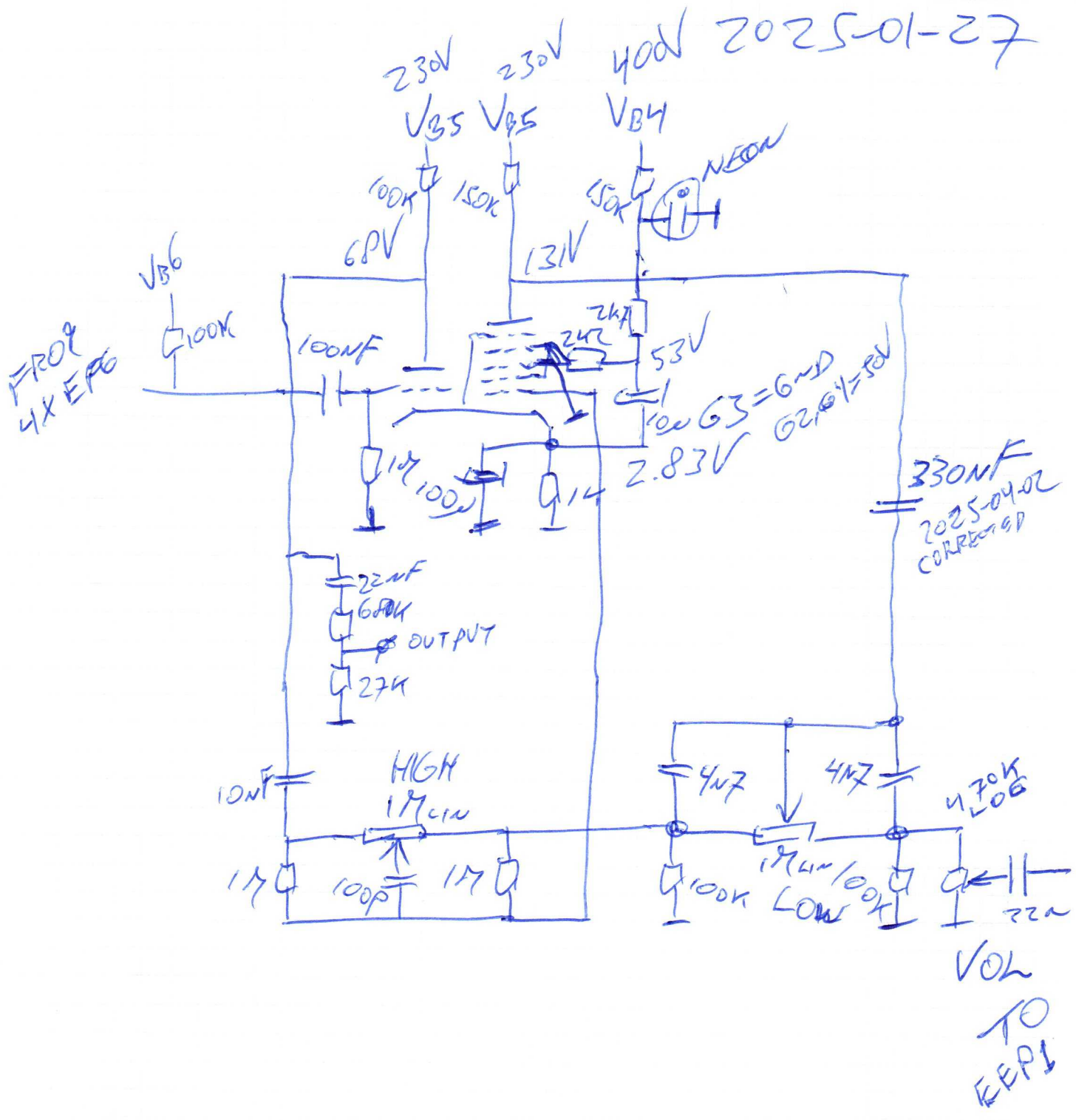
2.5V

2.5V

2.5V

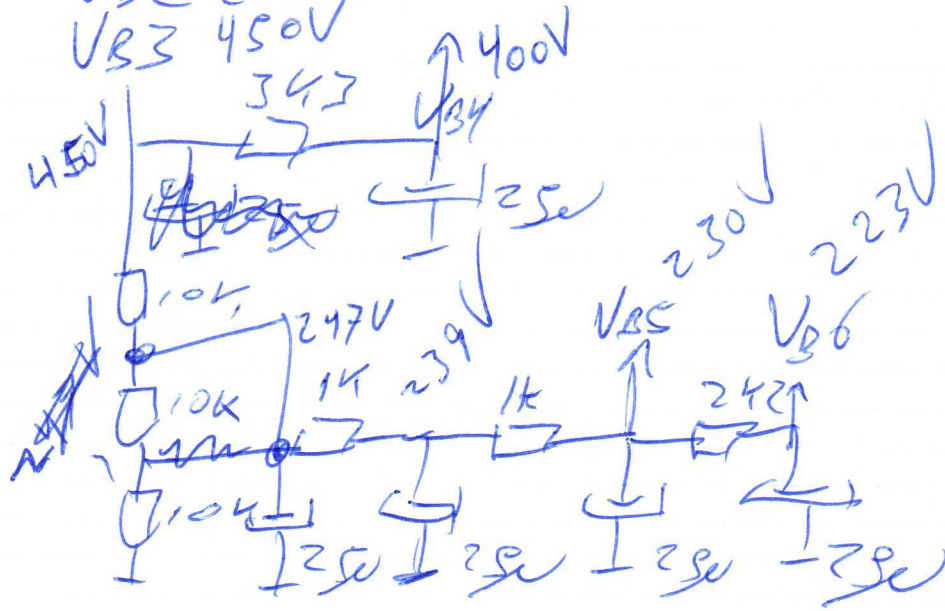
2.5V

2025-01-27



V_{B1} 567V
 V_{B2} 287V
 V_{B3} 450V

2025-01-26



230V MAINS

2025-01-27

