

Specification <u>MAP/CV1098/Issue-5</u> Dated <u>18.1.50.</u> To be read in conjunction with K1001 ignoring clauses 5.2, 5.8.	<u>SECURITY</u>	
	<u>Specification</u> RESTRICTED	<u>Valve</u> UNCLASSIFIED

—————> Indicates a change

<u>TYPE OF VALVE</u> - Transmitting Triode  <u>CATHODE</u> - Directly heated - thoriated tungsten  <u>ENVELOPE</u> - Metal-glass con- struction		<u>MARKING</u> See K1001/4 Additional Marking:- Serial Number	
<u>RATING</u>		<u>DIMENSIONS AND CONNECTIONS</u>	
		See drawing on page 3.	
		<u>PACKING</u> See K1005.	
		<u>BASE</u> None	
Filament Current (A) 35.0 Filament Voltage (V) 8.25 Max. Anode Dissipation (W) 750 Max. Anode Voltage (kV) 23.0 The valve is capable of operation at frequencies up to 100 Mc/s, and with suitable precautions up to 250 Mc/s.		Note  A	
<u>CAPACITANCES (pF)</u>			
C <sub>ag</sub>	6.8		
C <sub>gf</sub>	8.1		

NOTE

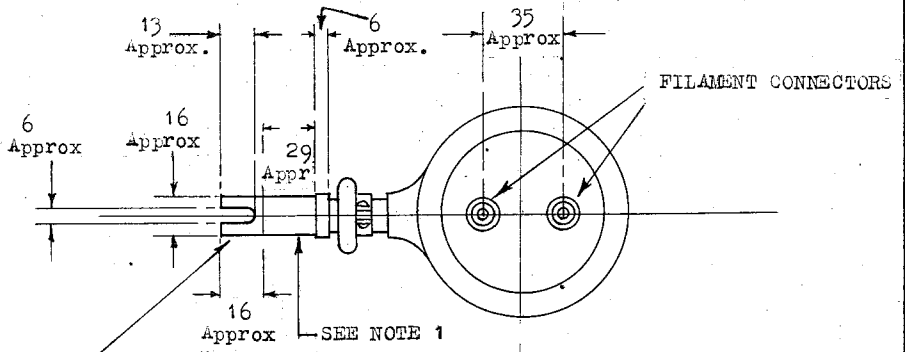
A. For this dissipation forced air cooling must be provided by at least 90 cu.ft. of air per minute with a pressure drop across the valve of the order of 2 inches of water.

To be performed in the order specified and are additional to those applicable in K1001.

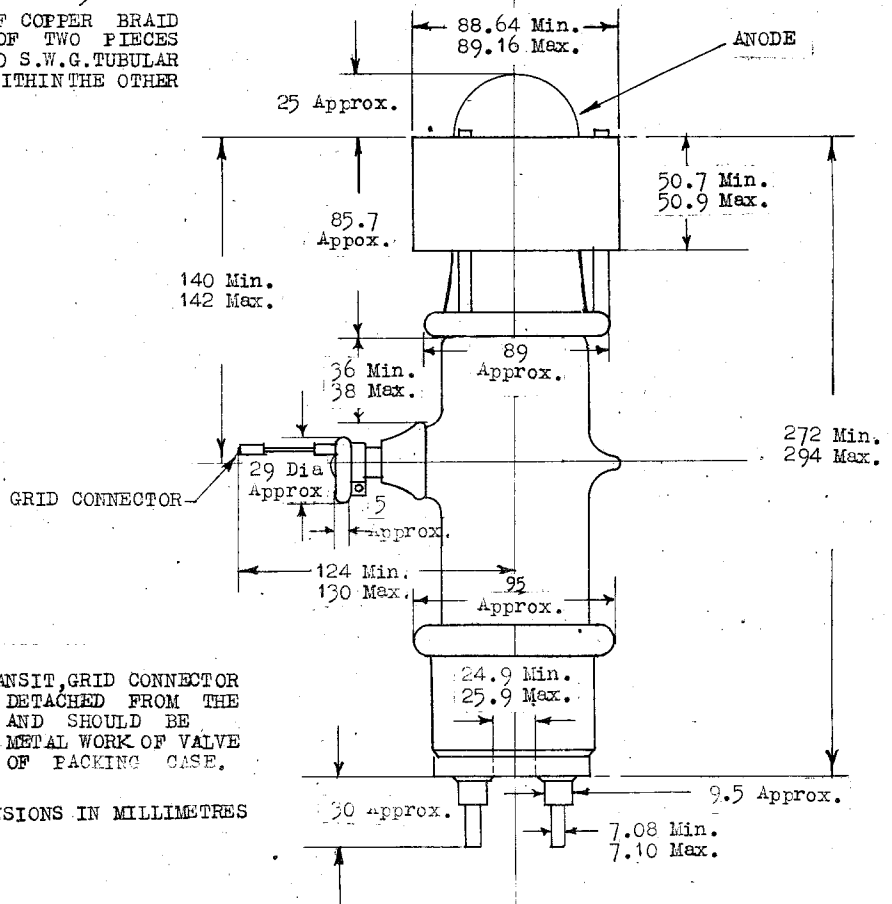
Test Conditions				Test	Limits		No. Tested	Note	
					Min.	Max.			
For the following-tests, forced air cooling shall be provided by not more than 90 cu.ft. of air per minute with a pressure drop across the valve of the order of 2 inches of water.									
a	If	Va	Vg	Ia(mA)	<u>Hot Flash Process</u> Va maintained at 30kV for a period of 5 mins. during which time the valve shall show no signs of breakdown.			100%	1
	35.0	Raised slowly from 10kV to 30kV and maintained until flashing ceases	-	5.0 approx.					
b	35.0	0	0	-	Vf (V)	7.75	8.75	100%	
c	35.0	7,000	-	100	Reverse Ig (mA)	-	1.0	100%	
d	35.0	7,000 to 5,000	-	Maintained at 100	Vg change (V)	44.0	60.0	5%(4)	
e	35.0	275	275	-	Ic (A)	0.87	1.15	100%	
f	-	300	300	Ic=0.2A	If (A)	-	25.0	100%	
g	35.0	7,000	-	100	Reverse Ig (mA)	-	1.0	100%	
h	35.0	Anode and grid strapped Peak applied volts 6kV See K1001/AV			Ie (A)	25.0	-	2%(1)	
j					<u>CAPACITANCES (pF)</u>				
					Cag	5.10	8.50	6	
				Cge	6.90	9.30	per week		

NOTE

- For test 'a' there shall be a 300Ω resistor in series with the applied volts, and a capacitance of not more than 0.25 μF. in parallel with the supply volts on the supply side of the resistor. Once the conditions specified have been met they need not be repeated for acceptance testing.



1 STRIP OF COPPER BRAID  
COMPOSED OF TWO PIECES  
OF 24/18/40 S.W.G. TUBULAR  
BRAID ONE WITHIN THE OTHER



NOTES:-

1. IN TRANSIT, GRID CONNECTOR SHOULD BE DETACHED FROM THE GRID SEAL AND SHOULD BE ATTACHED TO METAL WORK OF VALVE OR INSIDE OF PACKING CASE.

2. ALL DIMENSIONS IN MILLIMETRES