



## OSCILLATOR KLYSTRON

### Service Type CV9492

The data should be read in conjunction with the Oscillator Klystron Preamble.

### ABRIDGED DATA

Low voltage reflex klystron for local oscillator service.

Frequency range . . . . .	8500 to 9500	MHz
Typical output power . . . . .	45	mW
Electronic tuning range . . . . .	30	MHz
Output . . . . .	to no. 16 waveguide (0.900 x 0.400 inch internal)	
Coupler . . . . .	UG-39/U (154 I.E.C.-UBR100)	
Mechanical tuning (see note 1) . . . . .	single shaft	



### GENERAL

#### Electrical

Cathode . . . . .	indirectly heated, oxide coated	
Heater voltage . . . . .	6.3	V
Heater current . . . . .	0.6	A

#### Mechanical

Overall dimensions . . . . .	4.390 x 1.940 x 1.906 inches max 111.5 x 49.28 x 48.41mm max	
Net weight . . . . .	10 ounces (280g) approx	
Mounting position . . . . .	any	
Base . . . . .	5-pin octal	
Reflector connection (see note 2) . . . . .	top cap B.S.448-CT1	

**Cooling (See note 3)** . . . . . natural

## MAXIMUM AND MINIMUM RATINGS (Absolute values) (See note 4)

No individual rating to be exceeded.

	Min	Max	
Heater voltage . . . . .	5.8	6.8	V
Resonator voltage . . . . .	—	400	V
Resonator current . . . . .	—	50	mA
Reflector voltage (see note 5) . . . . .	-20	-500	V
Body temperature (see note 6) . . . . .	—	140	°C

## RANGE OF CHARACTERISTICS AND TYPICAL OPERATION

### Operating Conditions

Heater voltage . . . . .	6.3	V
Resonator voltage . . . . .	350	V
Load v.s.w.r. . . . .	1.1:1	max

### Range of Characteristics

	Min	Typical	Max	
Heater current . . . . .	0.52	0.58	0.61	A
Resonator current . . . . .	20	35	44	mA
Reflector voltage . . . . .	-165	—	-365	V
Output power . . . . .	30	45	—	mW
Mechanical tuning range . . . . .	8500	—	9500	MHz
Tuning rate . . . . .	—	7.0	—	MHz/turn
Electronic tuning range to -3db points . . . . .	20	30	—	MHz
Reflector modulation sensitivity . . . . .	—	0.75	—	MHz/V
Frequency drift (see note 7) . . . . .	—	3.0	5.0	MHz

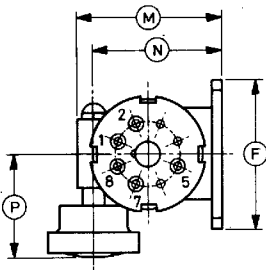
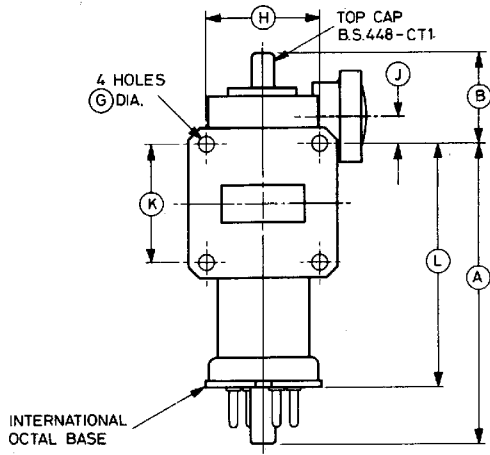
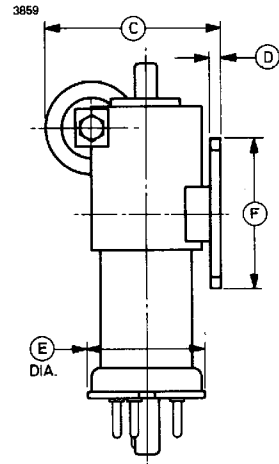
## NOTES

1. Clockwise rotation of the tuner increases the frequency. The tuner torque is 20oz in (0.14Nm) max. **Warning** No stops are fitted to the tuner and tuning beyond the specified frequency range may damage the klystron.
2. The K311 is available to order with a flexible lead reflector connection.
3. The resonator is normally operated at earth potential and in good thermal contact with the waveguide system.

4. All voltages except the heater voltage are with respect to cathode.
5. The reflector circuit impedance must not exceed  $0.5M\Omega$ . The reflector must never become positive with respect to cathode.
6. For best life, the operating temperature of the klystron body should be kept as low as possible.
7. Measured between 4 and 15 minutes after switching on all supplies, at  $9000 \pm 20\text{MHz}$ .
8. When supplied as CV9492, the flexible lead reflector connection will be fitted.



**OUTLINE (All dimensions without limits are nominal)**



**Base Connections**

Pin	Element
1	No connection
2	Heater
3	Omitted
4	Omitted
5	Resonator
6	Omitted
7	Heater, cathode
8	No connection
Top cap	Reflector

Ref	Inches	Millimetres	Ref	Inches	Millimetres
A	3.350 max	85.09 max	H	1.220 ± 0.004	30.99 ± 0.10
B	1.000 ± 0.040	25.40 ± 1.02	J	0.280 ± 0.015	7.11 ± 0.38
C	1.906 max	48.41 max	K	1.280 ± 0.004	32.51 ± 0.10
D	0.125	3.18	L	2.632 ± 0.060	66.85 ± 1.52
E	1.300 max	33.02 max	M	1.625 max	41.28 max
F	1.625 ± 0.005	41.28 ± 0.13	N	1.394 ± 0.010	35.41 ± 0.25
G	0.169 ± 0.003	4.293 ± 0.076	P	1.125	28.58

Millimetre dimensions have been derived from inches.