



Excellence in Electronics

**CK3BCP7/
QK767**

GENERAL DESCRIPTION

The CK3BCP7/QK767 is a cathode ray tube which is used as a simulator for the CK7571. This tube may be utilized for visual inspection of the input signal and for determining the focus and deflection capabilities of the circuitry.

GENERAL CHARACTERISTICS

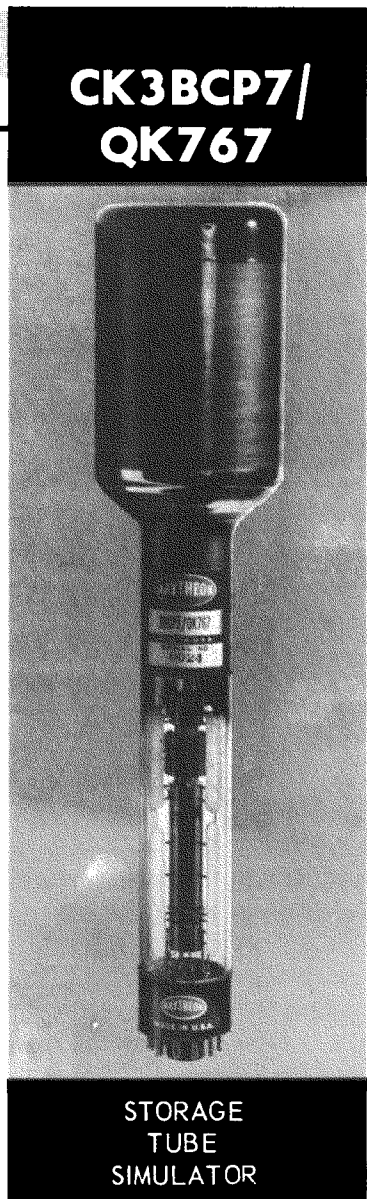
ELECTRICAL

Phosphor	P7
Heater	
Heater Voltage	6.3 V±10%
Heater Current	0.6 A
Maximum Ratings	
Anode Voltage	6000 Vdc
Grid #1 (control electrode) Voltage	
Negative Bias	-125 Vdc
Positive Bias	0 Vdc
Positive Peak Value	+2 V
Grid #2	1000 Vdc
Focus Anode Voltage	4000 V
Typical Operating Conditions	
(All Voltages Measured With Respect to Cathode)	
Cathode	0V
G1 (Control Grid) Cutoff	-30V
G2	400V
Anode	3500V
Focus Anode	
Electrostatic	400V
Magnetic	3500V

MECHANICAL CHARACTERISTICS

Terminal Connections:

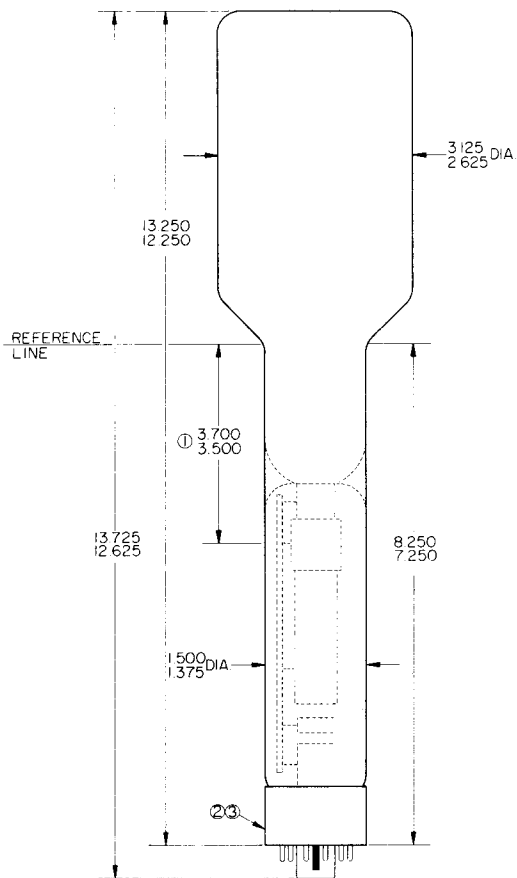
Pin 1 Heater	Pin 7 no connection
Pin 2 Grid #1	Pin 8 no connection
Pin 3 no connection	Pin 9 no connection
Pin 4 Anode 2 (focus anode)	Pin 10 Grid #2
Pin 5 no connection	Pin 11 Cathode
Pin 6 Anode 1	Pin 12 Heater
Focusing	Magnetic & Electrostatic
Deflection	Magnetic
Maximum Deflection Angle	30°
Over-all Length	13-3/16"
Bulb Diameter	3" Nominal
Neck Diameter	1-1/2" Maximum
Screen Diameter	2" (approx.)
Base	Small Shell Duodecal
Mounting Position	Any



STORAGE
TUBE
SIMULATOR



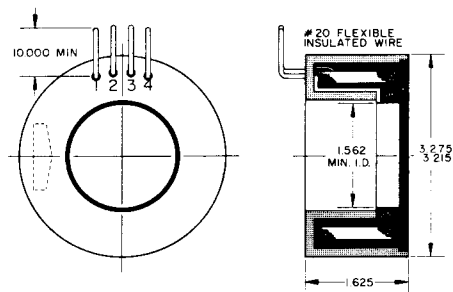
STORAGE TUBE SIMULATOR



NOTES

- 1) LOCATION OF DEFLECTION YOKE AND THE GAP OF THE FOCUSING COIL MUST BE WITHIN THIS SPACE
- 2) SOCKET FOR THIS BASE SHOULD NOT BE RIGIDLY MOUNTED, IT SHOULD HAVE FLEXIBLE LEADS AND BE ALLOWED TO MOVE FREELY BOTTOM CIRCUMFERENCE OF BASE SHELL WILL FALL WITHIN A CIRCLE CONCENTRIC WITH CONE AXIS, AND HAVING A DIAMETER OF 2.000
- 3) B12-43 12 PIN BASE

BM-411 FOCUS COIL



LEADS

- #1 - S1
- #2 - F1
- #3 - S2
- #4 - F2

TICKLER COIL

RESISTANCE - 35 TO 50 OHMS (AT 20°C)
 MAX CURRENT - 30 mA RMS
 VOLTAGE RATING - 250 V
 INDUCTANCE - 45 MILLIHENRIES APPROX

FOCUS COIL

RESISTANCE - 6500 TO 9000 OHMS (AT 20°C)
 MAX CURRENT - 25 mA dc
 VOLTAGE RATING - 250 V

NOTES:

- 1) - FOR USE WITH RECORDING STORAGE TUBES AND SIMULATORS
- 2) - TICKLER COIL IS PROVIDED TO PERMIT COMPENSATING FOR IMPROPER FOCUS AT THE EDGES OF A PATTERN CAUSED BY THE VARIATION IN DISTANCE FROM THE CENTER OF DEFLECTION TO a) THE CENTER OF A STORAGE AREA OF A STORAGE TUBE, AND b) THE PERIPHERY OF A STORAGE AREA THIS TICKLER COIL USEFUL ONLY FOR SLOW SCANNING SPEEDS.
- 3) - WHEN NOT REQUIRED, THE TICKLER COIL MAY BE LEFT UNCONNECTED
- 4) - SHELL MATERIAL - ANNEALED SWEDISH IRON OR EQUIVALENT.

INDUSTRIAL TUBE DIVISION

RAYTHEON COMPANY

55 CHAPEL ST., NEWTON 58, MASS.