

# FULL WAVE RECTIFIER

# FW4-800

Directly-heated power rectifier for outputs up to 800V at 125mA.

## FILAMENT

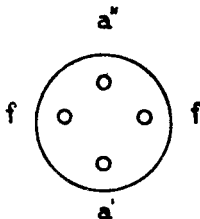
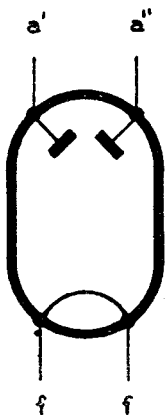
$V_f$	4.0	V
$I_f$	3.0	A

## LIMITING VALUES

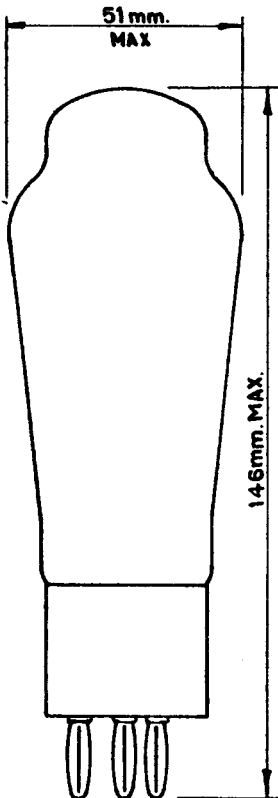
Max. Anode Voltage	2x850 V.rms
Max. Rectified Current	125 mA
Max. Reservoir Capacitance	4 $\mu$ F
Min. Value of Series Protective Resistance (per anode)	150 $\Omega$

## DIMENSIONS

### ARRANGEMENT OF ELECTRODES AND BASE CONNECTIONS.



BRITISH 4-PIN BASE



# FW4-800

## FULL WAVE RECTIFIER

Directly-heated power rectifier for outputs up to 800V at 125mA.

