

DESCRIPTION AND RATING

THYRATRON 6044

The 6044 is a three-electrode, inert-gas-filled thyatron with negative control characteristic designed especially for motor-control circuits where short ionization time is required.

Satisfactory and dependable performance under conditions of shock and vibration is a particular advantage to be gained with the use of this tube. Utilizing a design where both electrical connection and mechanical support are provided by a single set of connections, the tube can be fastened to a control panel by means of the screws on the terminals. Because of this feature the tube can be held rigidly and securely in control apparatus, and the circuit design is simplified since sockets are unnecessary.

TECHNICAL INFORMATION

MAXIMUM RATINGS, Absolute Values

Maximum Peak Anode Voltage		
Inverse	500	Volts
Forward	350	Volts
Maximum Cathode Current		
Peak	77	Amperes
Average	6.4	Amperes
Surge (maximum duration 0.1 second)	770	Amperes
Maximum Averaging Time	6	Seconds
Maximum Negative Control-grid Voltage		
Before Conduction	250	Volts
During Conduction	10	Volts
Maximum Positive Control-grid Current		
Average (Averaging time, one cycle)	0.2	Ampere
Ambient Temperature Limits	-55 to +75	C

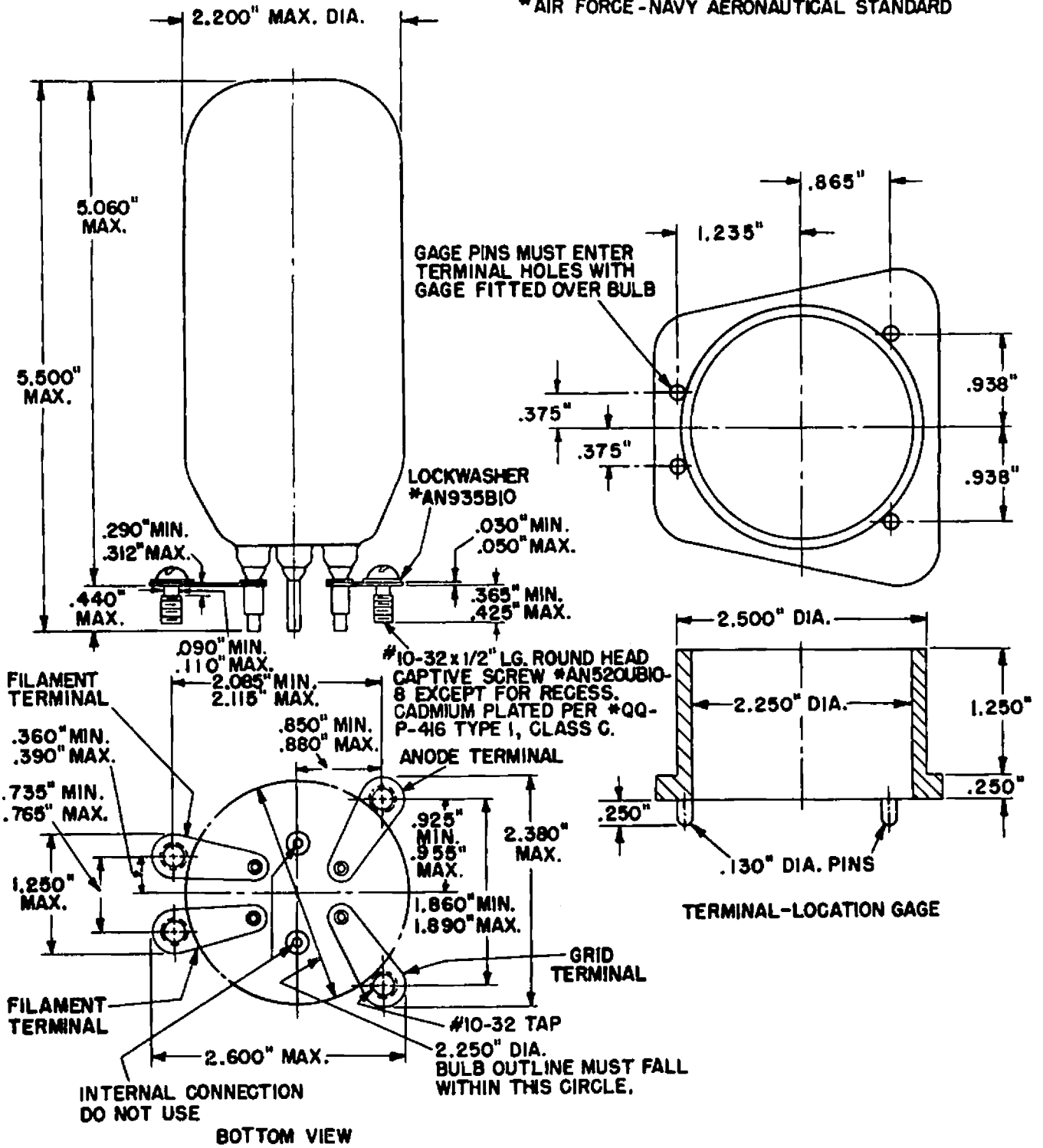
GENERAL

Electrical Data	Minimum	Bogey	Maximum	
Filament Voltage	2.37	2.5	2.62	Volts
Filament Current at 2.5 Volts		17	19	Amperes
Cathode Heating Time	60			Seconds
Anode-to-control-grid Capacitance		12.5		uuf
Control Grid - Cathode Capacitance		22.5		uuf
Ionization Time, approximate		10		Microseconds
Anode Voltage Drop		12		Volts

Mechanical Data

Type of Cooling - Convection		
Mounting Position - Vertical, Base Down		
Net Weight, maximum	0.33	Found

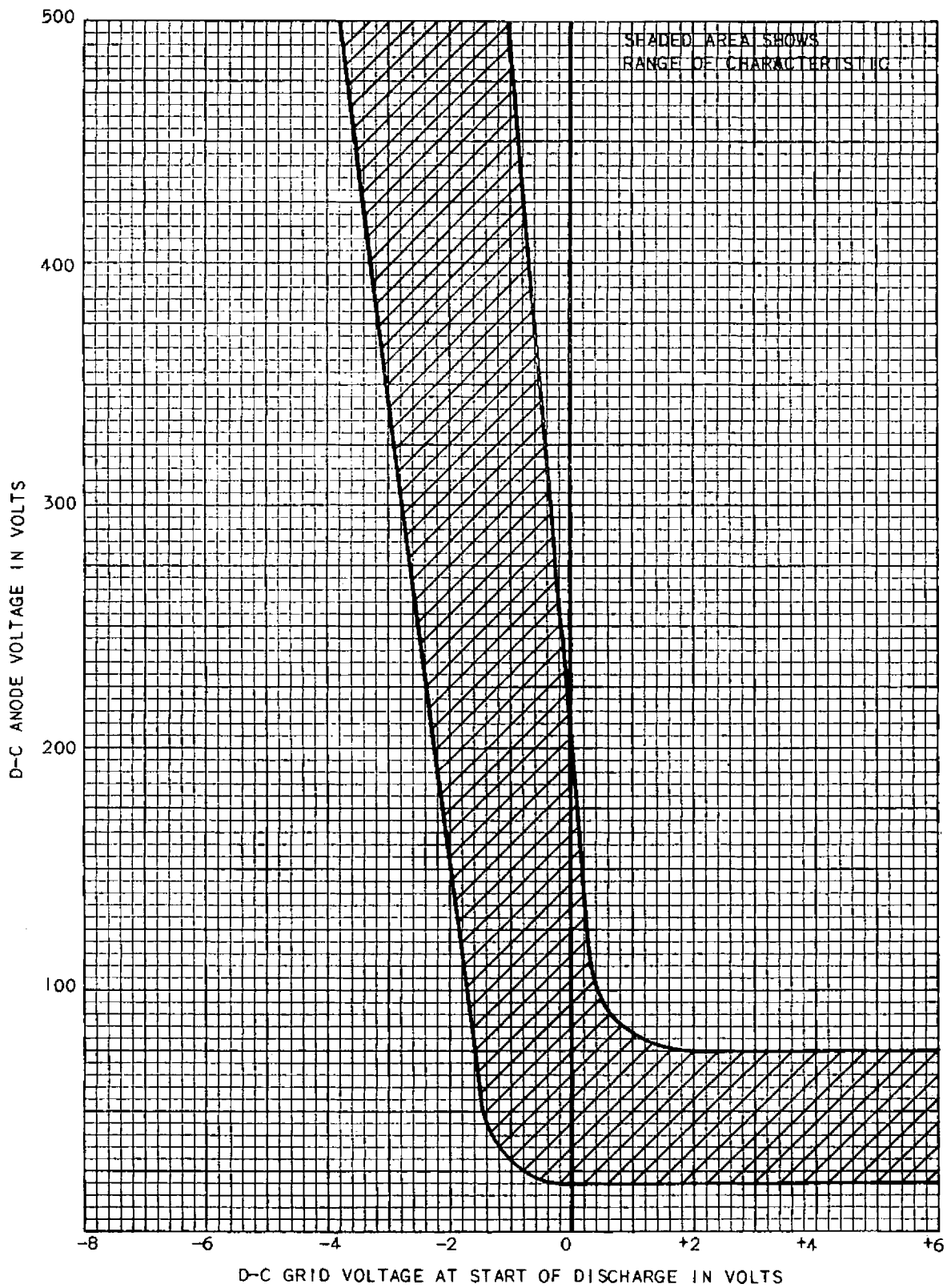
GENERAL  ELECTRIC



N21552AZ

Outline
6044

January 19, 1951



K-69087-72A440

January 3, 1951

6044

Typical Control Characteristic

GENERAL  ELECTRIC
ELECTRONICS DEPARTMENT, TUBE DIVISIONS
SCHENECTADY, NEW YORK