

TUNG-SOL**CATHODE RAY**

THE 21CVP4 IS A DIRECT VIEW PICTURE TUBE DESIGNED FOR TELEVISION APPLICATIONS. ITS FEATURES INCLUDE:

ELECTROSTATIC FOCUS	ALUMINIZED SCREEN
MAGNETIC DEFLECTION	GRAY FILTER FACEPLATE
UNIPOTENTIAL CATHODE	RECTANGULAR GLASS CONSTRUCTION
EXTERNAL CONDUCTIVE COATING	19 1/16" X 15 1/16" RASTER SIZE
REQUIRES NO ION TRAP	

ELECTRICAL DATA

		ELECTROSTATIC
		MAGNETIC
FOCUSING METHOD		
DEFLECTING METHOD		
DEFLECTION ANGLE (APPROX.):		
HORIZONTAL	85	DEGREES
DIAGONAL	90	DEGREES
DIRECT INTERELECTRODE CAPACITANCES (APPROX.):		
CATHODE TO ALL OTHER ELECTRODES	5	$\mu\mu\text{f}$
GRID #1 TO ALL OTHER ELECTRODES	6	$\mu\mu\text{f}$
MAXIMUM EXTERNAL CONDUCTIVE COATING TO ANODE	2500	$\mu\mu\text{f}$
MINIMUM EXTERNAL CONDUCTIVE COATING TO ANODE	2000	$\mu\mu\text{f}$

OPTICAL DATA

PHOSPHOR NUMBER	SULFIDE TYPE	P-4
FLUORESCENT COLOR		WHITE
PHOSPHORESCENT COLOR		WHITE
PERSISTENCE		MEDIUM
FACEPLATE TRANSMISSION AT CENTER (APPROX.):	74	PERCENT

RATINGS

INTERPRETED ACCORDING TO DESIGN CENTER SYSTEM

HEATER VOLTAGE	6.3	VOLTS
HEATER CURRENT	0.6 \pm 10%	AMP.
MAXIMUM DC ANODE VOLTAGE	22 000	VOLTS
MAXIMUM DC GRID #4 VOLTAGE ^A	-550 TO +1100	VOLTS
MAXIMUM DC GRID #2 VOLTAGE	550	VOLTS
MAXIMUM GRID #1 VOLTAGE:		
DC NEGATIVE-BIAS VALUE	155	VOLTS
DC POSITIVE-BIAS VALUE	0	VOLTS
POSITIVE-PEAK VALUE	2	VOLTS
MAXIMUM DC PEAK HEATER-CATHODE VOLTAGE:		
HEATER NEGATIVE WITH RESPECT TO CATHODE		
DURING WARM-UP PERIOD NOT TO EXCEED 15 SECONDS	450	VOLTS
AFTER EQUIPMENT WARM-UP PERIOD	200	VOLTS
HEATER POSITIVE WITH RESPECT TO CATHODE	200	VOLTS
MAXIMUM GRID #1 CIRCUIT RESISTANCE	1.5	MEG OHMS

TYPICAL OPERATING CONDITIONS AND CHARACTERISTICS

DC ANODE VOLTAGE	16 000	VOLTS
DC GRID #4 VOLTAGE	-64 TO +352	VOLTS
DC GRID #2 VOLTAGE	300	VOLTS
DC GRID #1 VOLTAGE ^B	-28 TO -72	VOLTS

^A THE FOCUS ELECTRODE MAY BE MODULATED TO IMPROVE OVERALL FOCUS.

^B VISUAL EXTINCTION OF FOCUSED RASTER.

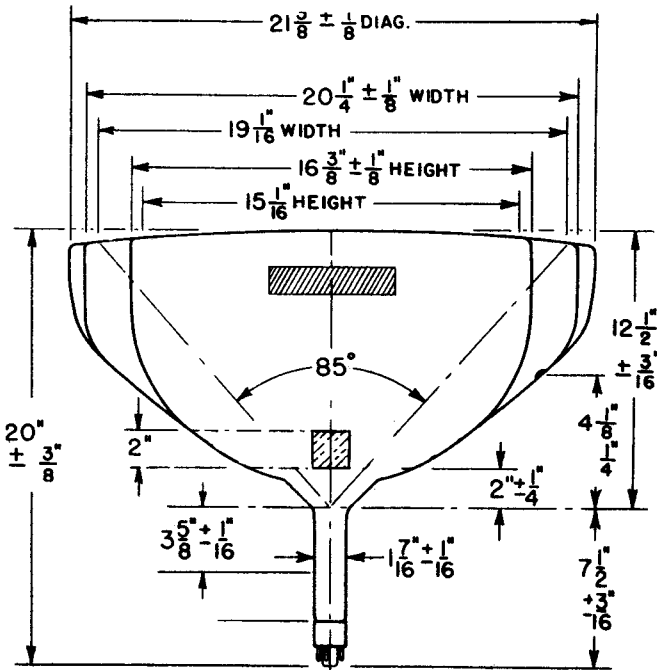
CONTINUED ON FOLLOWING PAGE

TUNG-SOL

CONTINUED FROM PRECEDING PAGE

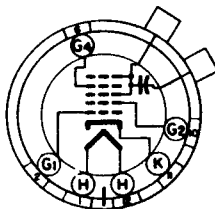
MECHANICAL DATA

OVERALL LENGTH	$20 \pm \frac{3}{8}$	INCHES
GREATEST DIMENSIONS OF BULB:		
DIAGONAL	$21 \frac{3}{8} \pm \frac{1}{8}$	INCHES
WIDTH	$20 \frac{1}{4} \pm \frac{1}{8}$	INCHES
HEIGHT	$16 \frac{3}{8} \pm \frac{1}{8}$	INCHES
MIN. USEFUL SCREEN DIMENSIONS:		
WIDTH	$19 \frac{1}{16}$	INCHES
HEIGHT	$15 \frac{1}{16}$	INCHES
BULB CONTACT	RECESSED SMALL CAVITY CAP	J4-21
BASE	SMALL SHELL DUODECAL 6-PIN	B6-63
BASING		12L
BULB CONTACT ALIGNMENT		
J4-21 CONTACT ALIGNS WITH PIN POSITION #6 \pm 30 DEGREES		



PIN CONNECTIONS

- PIN 1 - HEATER
- PIN 2 - GRID #1
- PIN 6 - GRID #4
- PIN 10 - GRID #2
- PIN 11 - CATHODE



- PIN 12 - HEATER
- ANODE CAP:
- GRID NO. 3
- GRID NO. 5

BOTTOM VIEW